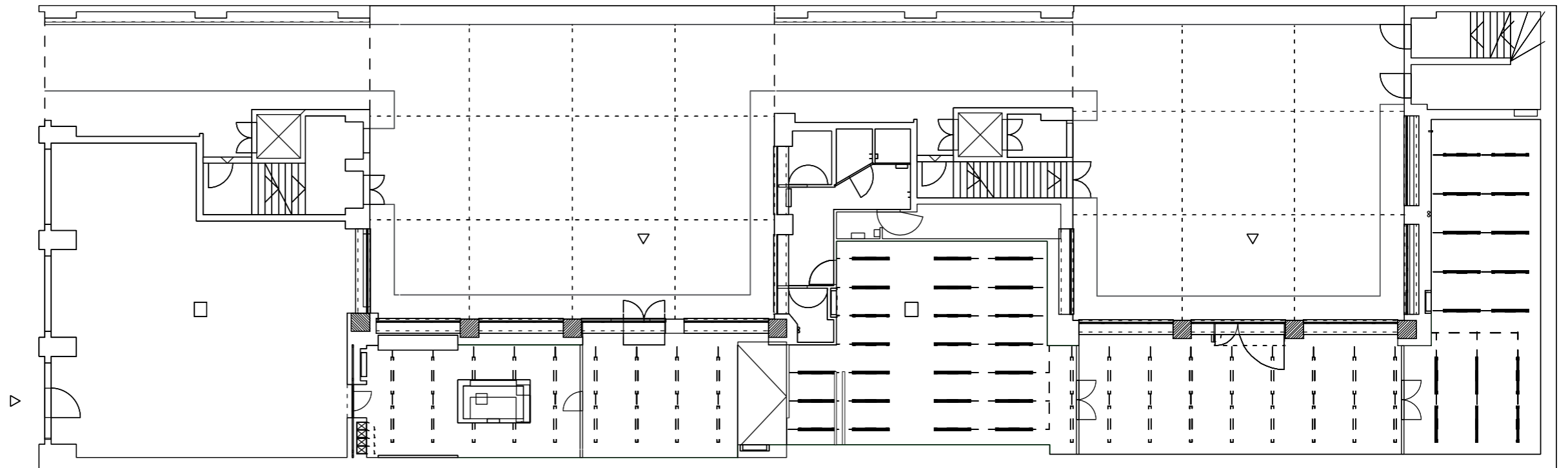


ifau  
Dresdener Str. 26  
D-10999 Berlin  
+49 (30) 27560453  
ifau@berlin.heimat.de

Draft  
Global Prayers  
Redemption and Liberation in the City  
NGBK - Berlin  
November 11th, 2011 - January 8th, 2012

Concept / Design / Options  
Version: 21.6.2011



Scale M 1:200

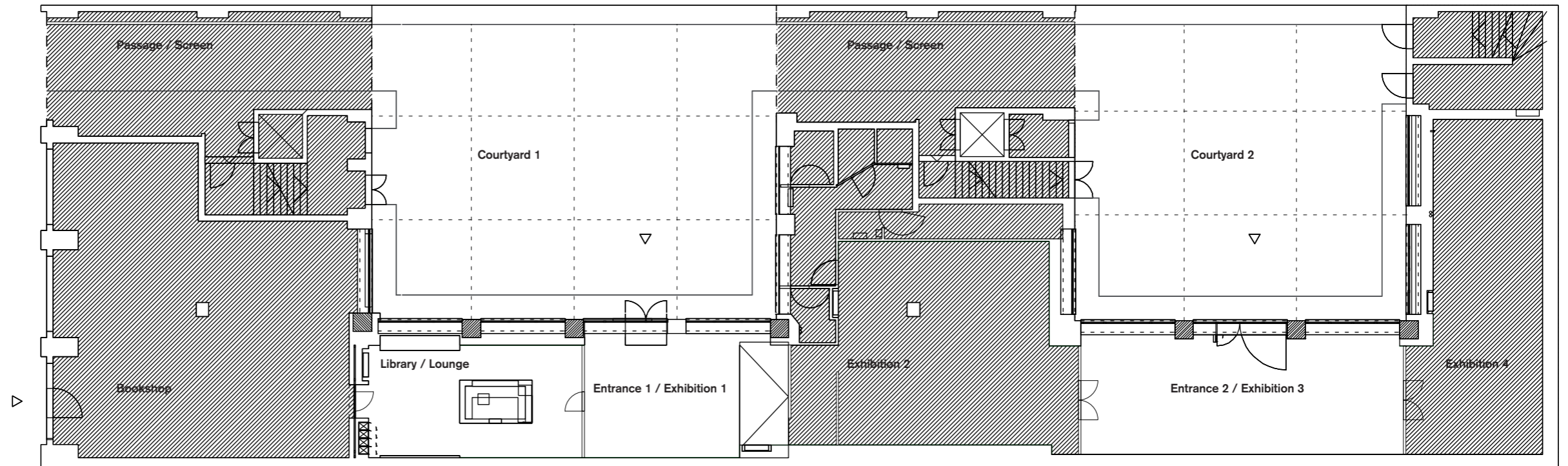
Concept

Basically the proposal aims to change NGBK's existing relation to the street and public by modifying and shifting the importance of its entranceways and intermediate spaces. Thus playing with modes of accessibility, scale and notions of publicness the concept relates to everyday practices common wherever spaces are adapted and transformed be it for worship or staging art. For Global Prayers the exhibition space will be partitioned into light and dark areas following the structure of the existing building. Coherent to this the passageways from street to court and court to court will be dark. The passage from the street, only lighted by a screen advertising

the exhibition title and eventually introductory text, is directing visitors to the main entrance in Courtyard 1, the second passage serves to show works, slideshows or video projections. The two courtyards will be activated to front both entrances of the side wing. A light roofing structure supporting fluorescent tubes on the level of the first floor will modify the ordinary state of the courtyards and thus claim and include the space as part of the exhibition area. In relation to the courtyards the adjacent sidewings will be lighted in a similar manner and serve as exhibition spaces open to and visible from the court. The existing main entrance via the bookshop

thus becomes a secondary access and will lead to a backspace for additional material on the exhibition, connected research and publications. The dark exhibition areas adjacent to the light entrance spaces will be confined by different forms of accesses allowing for various modes of transition. By these simple means NGBK's existing tubular space, constraining exhibitions to arrange works in circular sequences, is extended and now allows for unrestricted roaming and individual reading of the exposed works. The appropriation of the courtyards and new relation to the street stresses the urban approach of Global Prayers. The

devices employed, additional lighting as well as newly introduced thresholds deliberately relate to simple forms of adaption know in the context of informal religious spaces simultaneously being common means in arts institutions as well. In that way the design concept is stressing pragmatic use as a base for communication and rejecting simplistic images or replicas.

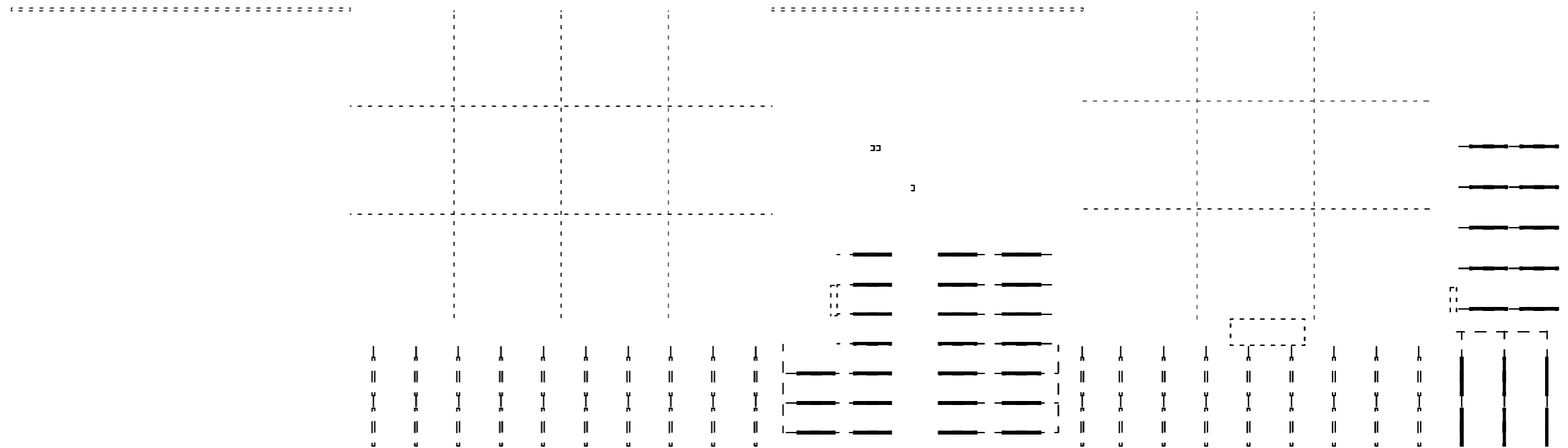


ifau

Draft  
Global Prayers  
Redemption and Liberation in the City  
NGBK - Berlin  
November 11th, 2011 - January 8th, 2012

Scale M 1:200

Lighting  
Option 1 with roofing structure supporting fluo-  
rescent tubes arranged according to the construc-  
tion grid of the existing building.

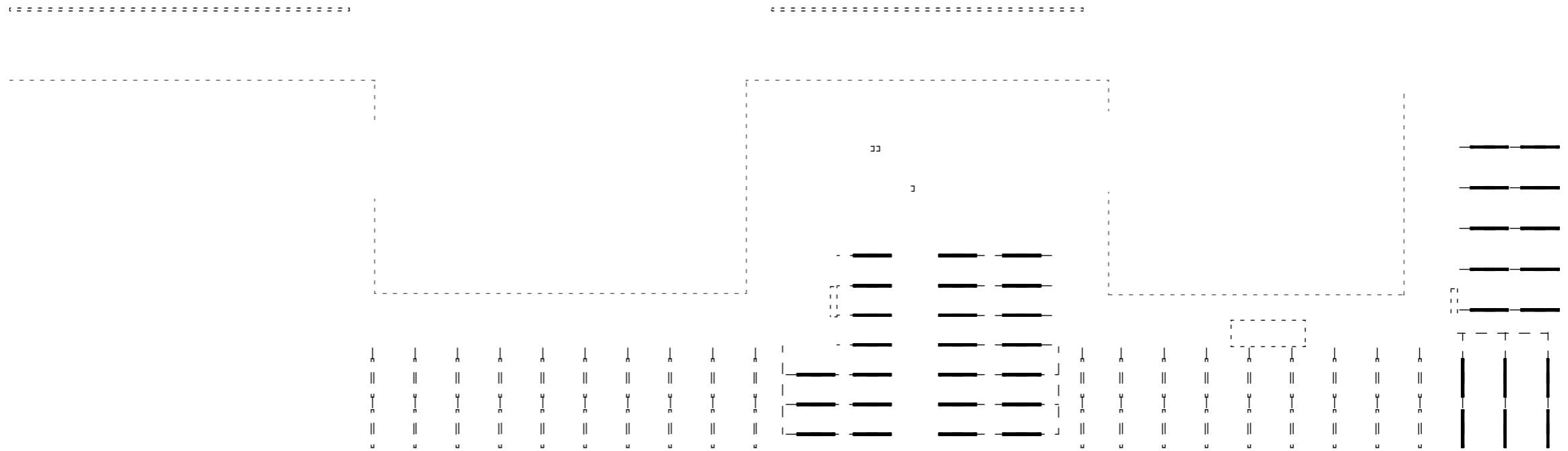


ifau

Draft  
Global Prayers  
Redemption and Liberation in the City  
NGBK - Berlin  
November 11th, 2011 - January 8th, 2012

Scale M 1:200

Lighting  
Option 2 with a range of spotlights highlighting  
the existing sidewalk.

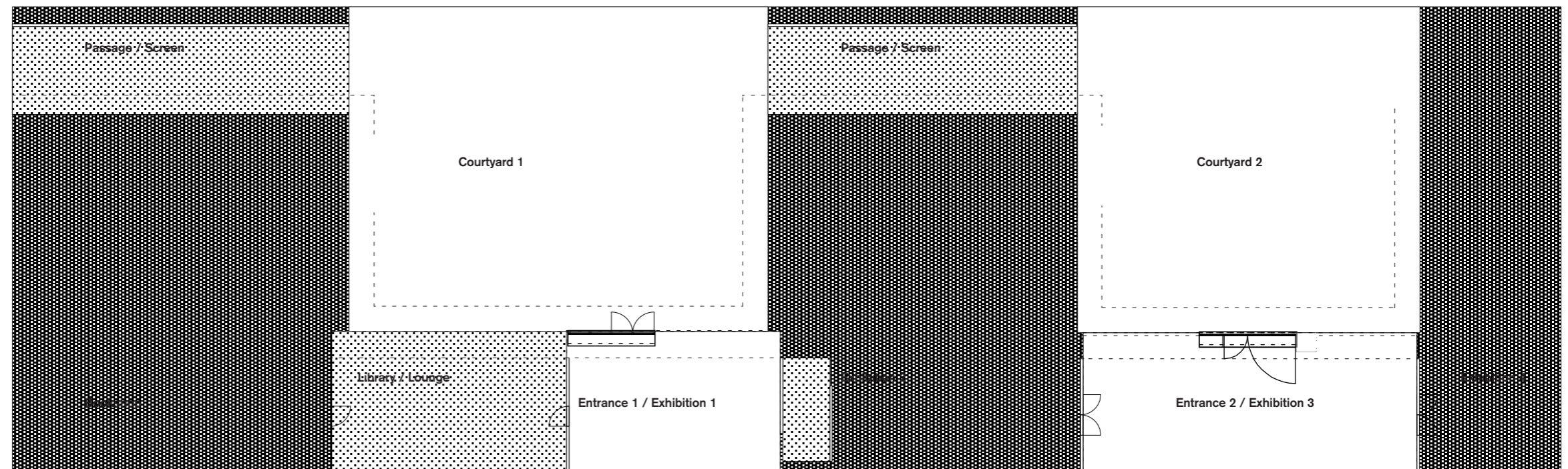


ifau

Draft  
Global Prayers  
Redemption and Liberation in the City  
NGBK - Berlin  
November 11th, 2011 - January 8th, 2012

Scale M 1:200

Light / Dark Exhibition Areas



ifau

Draft  
Global Prayers  
Redemption and Liberation in the City  
NGBK - Berlin  
November 11th, 2011 - January 8th, 2012

Scale M 1:200

Demolition / New

